



### Commercial Sinks with Ledge

- 3-1/2" basket strainer assembly with tailpiece
- Off-the-bowl clamp system, self-rimming, SynkSeal™ foam-in-place gasket installed
- Sound deadening pads
- Includes template and installation hardware
- Finish: Brushed Satin
- Material: Stainless Steel



PUM306



Model No.	Mfg. No.	Overall Width"	Overall Depth"	Overall Height"	Type	Steel Gauge	Drain Placement	Fits Cabinet Size"	Bowl Width"	Bowl Depth"	Price /Each
PUM306	1001-24	15"	15"	6"	Single Bowl Drop-In	20	Centre	18"	12"	10"	
PUM307	1017E1-24	20"	20-1/2"	8"	Single Bowl Drop-In	20	Centre-Rear	24"	18"	16"	
PUM308	2007E1-24	31-1/8"	20-5/8"	8"	Double Bowl Drop-In	18	Centre-Rear	33"	14"	16"	

### Pro Residential Sinks with Ledge

- All drop in sinks include an off-the-bowl clamp system, factory-installed, SynkSeal™ foam-in-place gasket
- Includes template and installation hardware
- 3-1/2" strainer
- Sound deadening pads
- Material: Stainless Steel
- Steel Gauge: 20
- Drain Placement: Centre-Rear
- Finish: Mirror
- Bowl Depth: 16"



PUM312



Model No.	Mfg. No.	Overall Width"	Overall Depth"	Overall Height"	Type	Fits Cabinet Size"	Bowl Width"	Price /Each
PUM312	JP703D7-24	20	20-1/2	7	Single Bowl Drop-In	24	18	
PUM313	JP737D7	31	20-1/2	7	Double Bowl Drop-In	33	14	
PUM314	JP1831D7U	31	18	7	Double Bowl Undermount	33	14	
PUM315	JE2020D7	20.5	20-7/8	8	Single Bowl Drop-In	21	18	

### Pro Hospitality/Bar Sink with Ledge

- 1-1/2" chrome-plated brass strainer and tailpiece included
- Off-the-bowl clamp system, self-rimming, SynkSeal™ foam-in-place gasket installed
- Sound deadening pads
- Includes template and installation hardware
- Overall Width: 15"
- Overall Depth: 15"
- Overall Height: 6-1/8"
- Type: Single Bowl Drop-In
- Material: Stainless Steel
- Steel Gauge: 20
- Drain Placement: Centre
- Finish: Brushed Satin
- Fits Cabinet Size: 18"
- Bowl Width: 12"
- Bowl Depth: 10"



Model No. PUM311 Mfg. No. JP717D6-24

Price/Each \$



### Commercial Hand Wash Basin

- 1-1/2" basket strainer assembly with tailpiece
- Exterior of bowl is buffed
- Integral back-splash
- Includes wall-hanger bracket
- Overall Width: 18-3/4"
- Overall Depth: 19-1/2"
- Overall Height: 7"
- Type: Wall-Mounted
- Material: Stainless Steel
- Steel Gauge: 16
- Drain Placement: Centre
- Finish: Brushed Satin
- Bowl Width: 16"
- Bowl Depth: 14"



Model No. PUM309 Mfg. No. 8100-24  
Price/Each \$



### Commercial Single Bowl Scullery Sink

- 3-1/2" basket strainer assembly with tailpiece
- Adjustable bullet feet
- Radius corners front and back only
- Integral backsplash
- Rolled edge at front and sides
- Overall Width: 21-1/4"
- Overall Depth: 21-5/8"
- Overall Height: 42-1/2"
- Type: Free-Standing
- Material: Stainless Steel
- Steel Gauge: 16
- Drain Placement: Centre
- Finish: Brushed Satin
- Bowl Width: 18"
- Bowl Depth: 18"
- Bowl Height: 33-1/2"

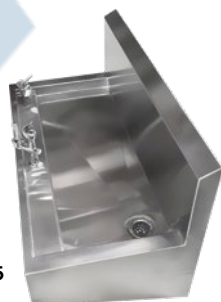


Model No. PUM310 Mfg. No. 7500-28  
Price/Each \$



### Drinking Fountains

- Type 304 stainless steel, 14 gauge, finish #4
- Includes: (1) Wall bracket, (2) Bubblers, (1) 1-1/2" drain
- Made in Canada
- Length: 37" (940 mm)
- Standard(s) Met: ETL, ASME A112.19.3, CSA B45.4-08 (R2013), CSA B125.1, NSF/ANSI 61



PUM325

### Mop Basin with Backsplash

- Type 304 stainless steel, 16 gauge, finish #4
- Centre drain • Pre-sloped
- Square interior corners
- Flattened rim
- Stainless steel dome strainer/lint basket with locking nut, neoprene gasket for push-on connections for DN 3"
- Made in Canada
- Overall Width: 24"
- Overall Depth: 24"
- Overall Height: 16"
- Type: Wall-Mounted
- Material: Stainless Steel
- Standard(s) Met: ETL, ASME A112.19.3, CSA B45.4-08 (R2013)



Model No. PUM316  
Mfg. No. EV2424-P-J Price/Each \$



Model No.	Mfg. No.	Length	Number of Drinking Stations	Price /Each
PUM325	CA-FAI372118	37" (940 mm)	2	
PUM326	CA-FAI542118	54" (1372 mm)	3	