

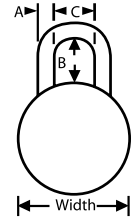


Combination Padlocks

- These combination padlocks feature the new Blockguard™ anti-shim technology
- Double-reinforced stainless steel case with cold-rolled steel construction shields locking mechanism from physical attack
- Hardened steel shackles resists cutting and prying
- 40 number, 3-number dialing provides thousands of possible combinations available
- Dial automatically locks under shackle tension to prevent "feeling out" the combination and automatically scrambles when closed to prevent accidental opening
- Fits lockers with a padlock eye of at least 5/16" (8 mm) in diameter



Master Lock



MASTER LOCK SUPERVISORY COMBINATION PADLOCKS

- The model **SAX608** combination padlock allows a control key to be used by a supervisor to access all combination padlocks in their system - great for storage lockers
- **SAX609** control key sold separately, please call your branch for charting these locker systems

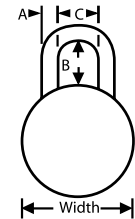
Model No.	Mfg. No.	Body Size		Body Material	Shackle Clearance			Shipping Weight (lbs.)	Price /Each
		Width"	Thickness"		A"	B"	C"		
SAX608	1525	1 7/8 Dia.	3/4	Stainless Steel	9/32	3/4	13/16	0.55	
SAX609	K1525	Control Key		Brass	-	-	-	0.02	

MASTER LOCK COMBINATION PADLOCKS

- World's best selling combination lock
- Hardened steel shackle for extra cut resistance
- Combination security for keyless convenience
- Double-armored stainless steel body
- 3-digit dialing and 1500 combinations for maximum security
- Model **SR914** are school standard's in combination padlocks



Master Lock

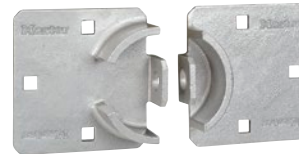


Model No.	Mfg. No.	Body Size		Body Material	Shackle Clearance			Shipping Weight (lbs.)	Price /Each
		Width"	Thickness"		A"	B"	C"		
SR914	1500	1 7/8 Dia.	3/4	Stainless Steel	9/32	3/4	13/16	0.50	
SAL506	1500LH	1 7/8 Dia.	3/4	Stainless Steel	9/32	2	13/16	0.50	

Master Lock High Security Hasps

- Ideal for vans, trucks, gates and vending machines
- Hardened steel hasp withstands forcible attacks
- Defeats attempts to pry and cut
- Designed to be used with **SGC384** (hidden shackle lock) for maximum security

SAO687

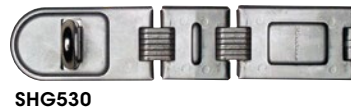


Model No.	Mfg. No.	Description	Hasp Length		Max Shackle Dia.		Shipping Weight (lbs.)	Price /Each
			Inches	mm	Inches	mm		
SAO687	770	9" x 4 1/2"	9	228	Accepts only puck locks		3.00	
SGC384	A2010	Lock	-	-	-		-	

Master Lock

Hinged Security Hasps

- Secure hard-to-lock property, ideal for corners and angles
- Hardened steel body for added strength
- Hardened boron alloy staples resist cutting and sawing
- Single and double hinge styles with hidden hinge pins



SHG530



SEJ524

Model No.	Mfg. No.	Description	Hasp Length		Max Shackle Dia.		Shipping Weight (lbs.)	Price /Each
			Inches	mm	Inches	mm		
SHG530	722DPFHC	Double Hinge	7 3/4	197	7/16	11	0.94	
SEJ524	720DPF	Single Hinge	6 1/4	159	7/16	11	0.80	

Master Lock

General Security Hasps

- Hardened wrought ribbed steel and rolled edge design for added strength
- Hardened steel staples resist cutting and sawing
- Hardened steel locking eyes for strong cut resistance
- Tamper proof hinges help resist prying



Model No.	Mfg. No.	Description	Hasp Length		Max Shackle Dia.		Shipping Weight (lbs.)	Price /Each
			Inches	mm	Inches	mm		
SEJ525	706D	Hard Wrought Steel Body	6	152	9/16	14	0.60	
SEJ526	704DPF	Hard Wrought Steel Body	4 1/2	114	1/2	13	0.40	
SAG267	703D	Hard Wrought Steel Body	3 1/2	89	11/32	9	0.30	

Master Lock